


# Dry Creek Airport

Identifier TS07  
 Elevation 152 ft  
 TPA 1,000 ft MSL  
 CTAF 122.9  
 ATIS (DWH) 124.95  
 36 Left traffic ptrn  
 18 Left traffic ptrn

 Ski Lakes

May Field

Grant



483' (324)

Fire Station

Shell

Runway 18

Cypress Rosehill

Huffmeister

18

36

STRUK

Skinner

488 (340)

Farney Elementary School

Spring Cypress

Home Depot

Post Office

Robison Elementary School

HP

290

Barker Cypress

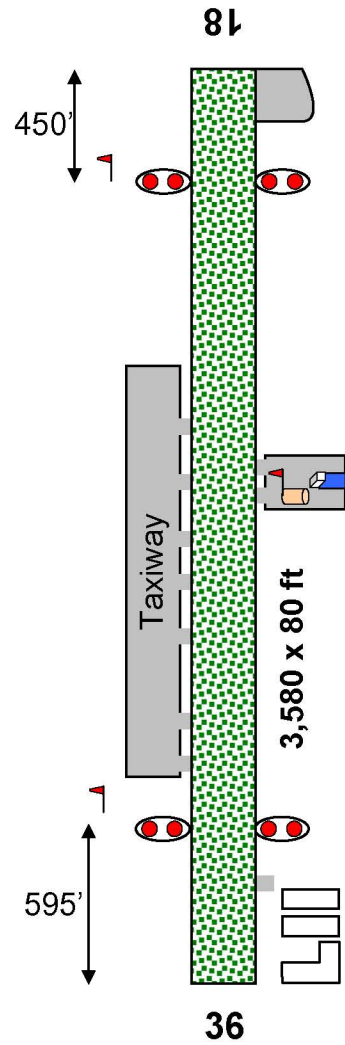
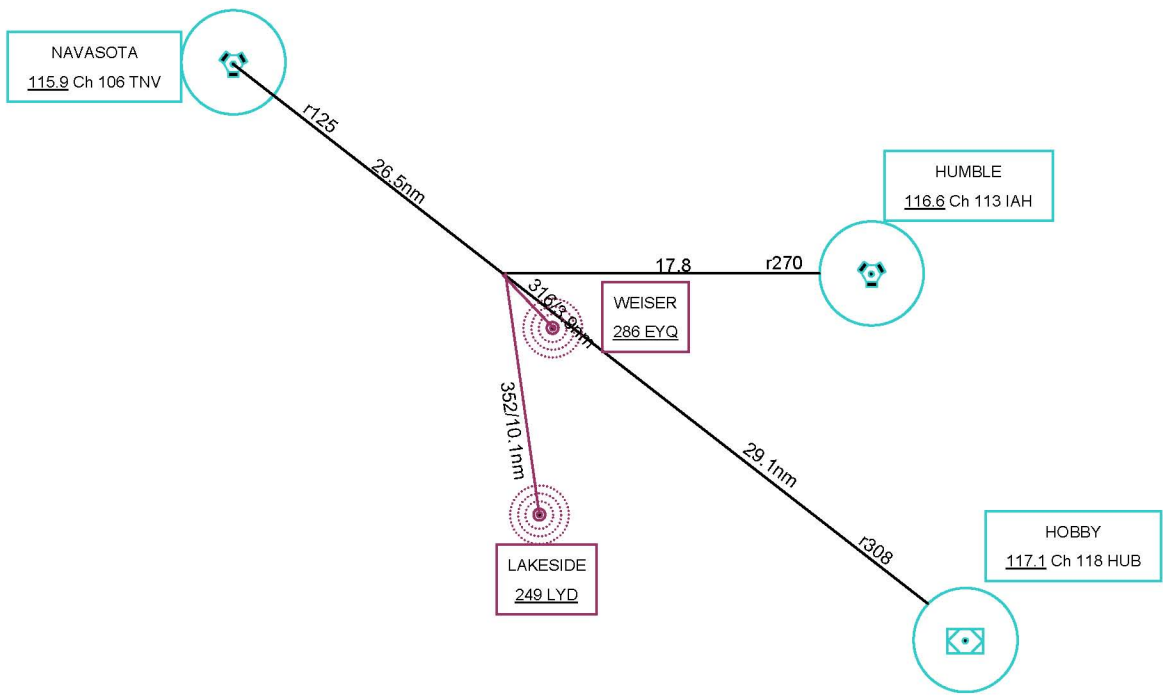
Teige

Randalls

Weiser



Runway 36



Houston Terminal Chart Mar 2010

Shows Dry Creek under 2,000 ft Class B ledge